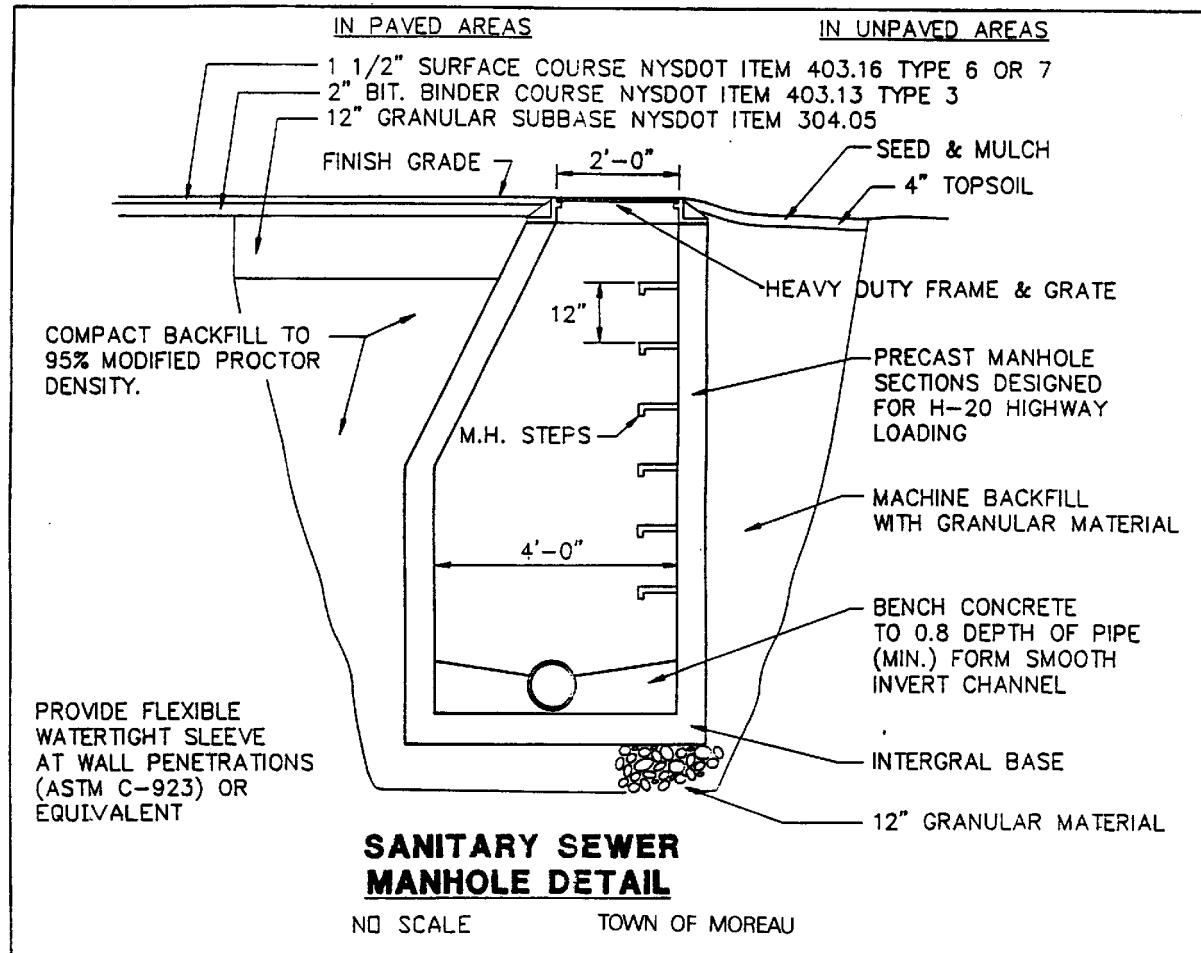


SUBDIVISION OF LAND

124 Attachment 1

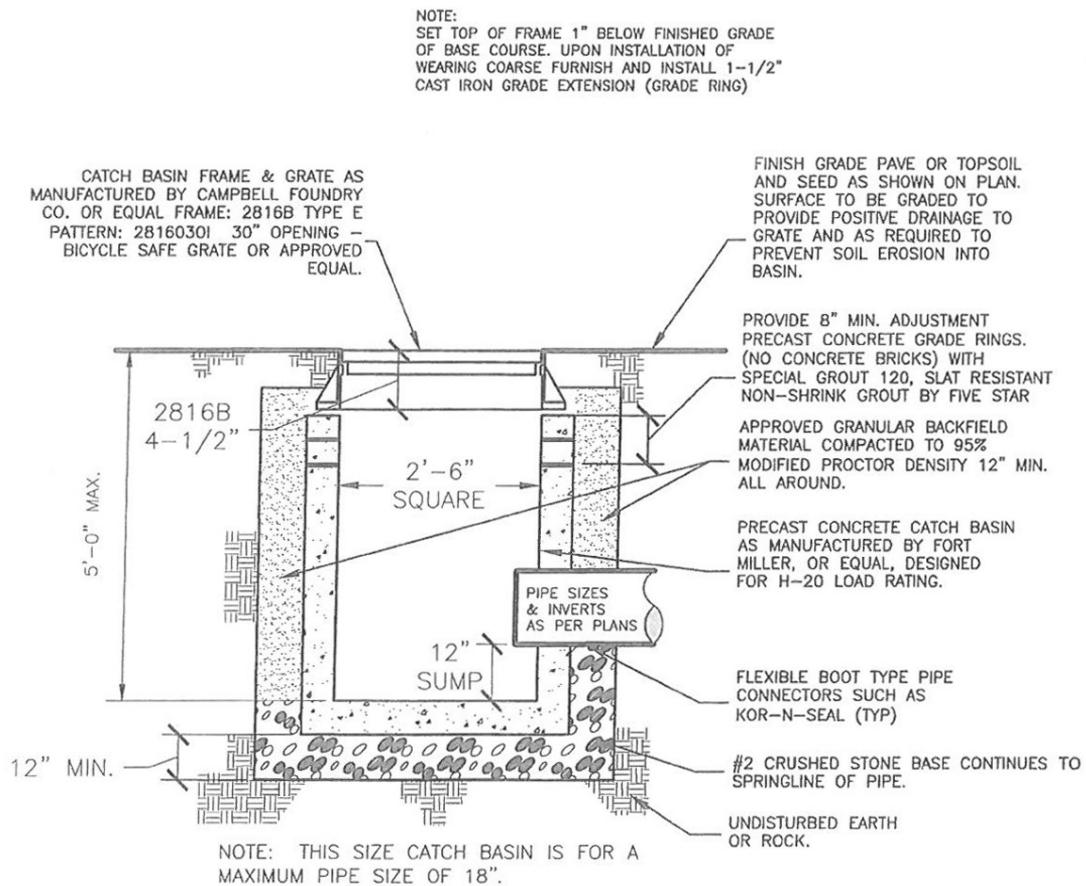
Town of Moreau



SUBDIVISION OF LAND

124 Attachment 2

Town of Moreau



TOWN OF MOREAU TYPICAL CATCH BASIN

NOT TO SCALE

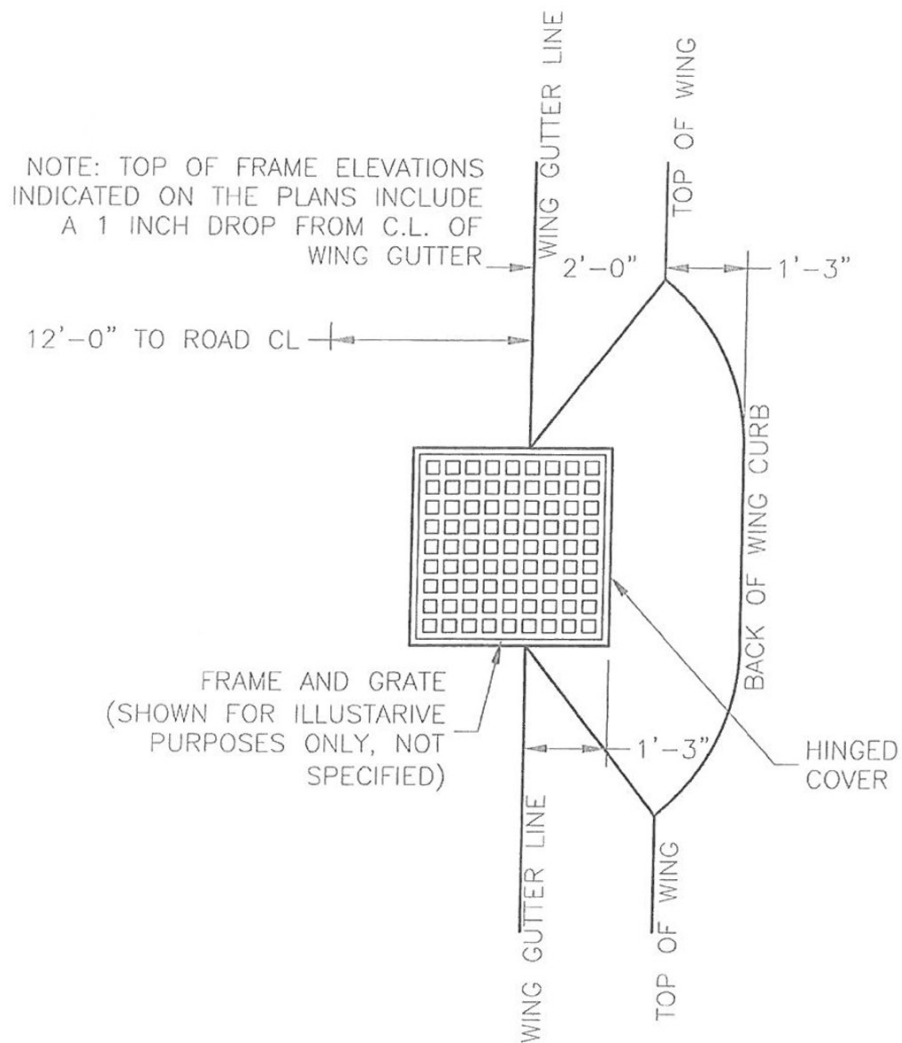
Town of Moreau

6" PVC FOOTING DRAINS. INVERT AS NEEDED TO ALLOW 2% SLOPE TO HOUSE LOCATION. USE NON SHRINK MORTAR GROUT TO SEAL PIPES.

SUBDIVISION OF LAND

124 Attachment 4

Town of Moreau



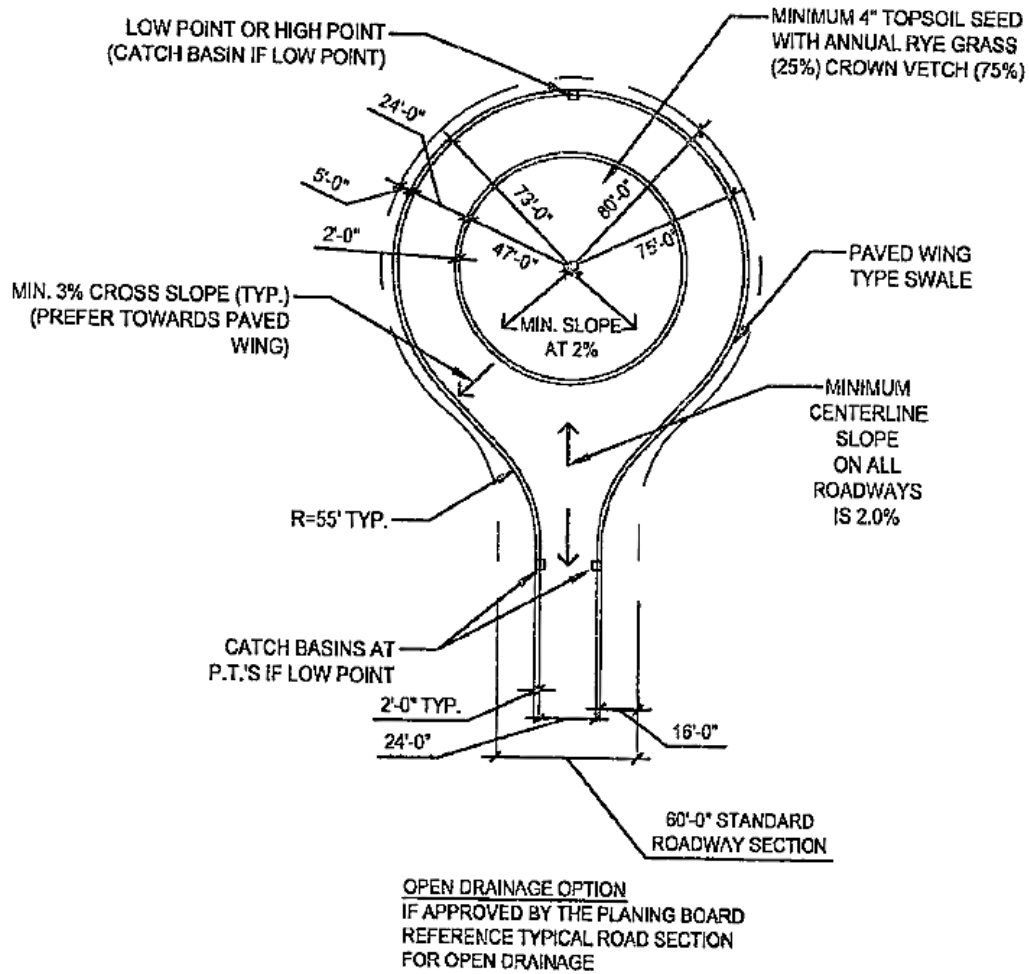
TOWN OF MOREAU TYPICAL WING GUTTER EYE BROW

NOT TO SCALE

SUBDIVISION OF LAND

124 Attachment 5

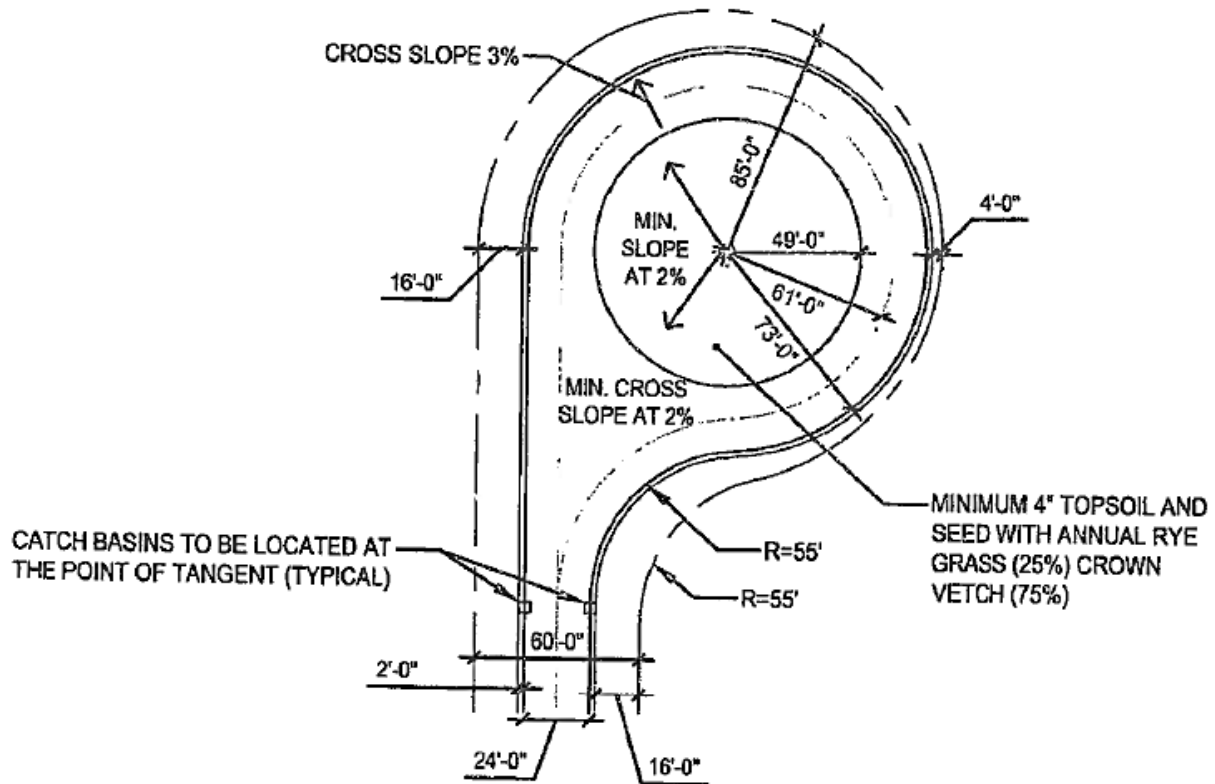
Town of Moreau



TYPICAL CUL-DE-SAC

NOT TO SCALE

SUBDIVISION OF LAND
124 Attachment 6
Town of Moreau

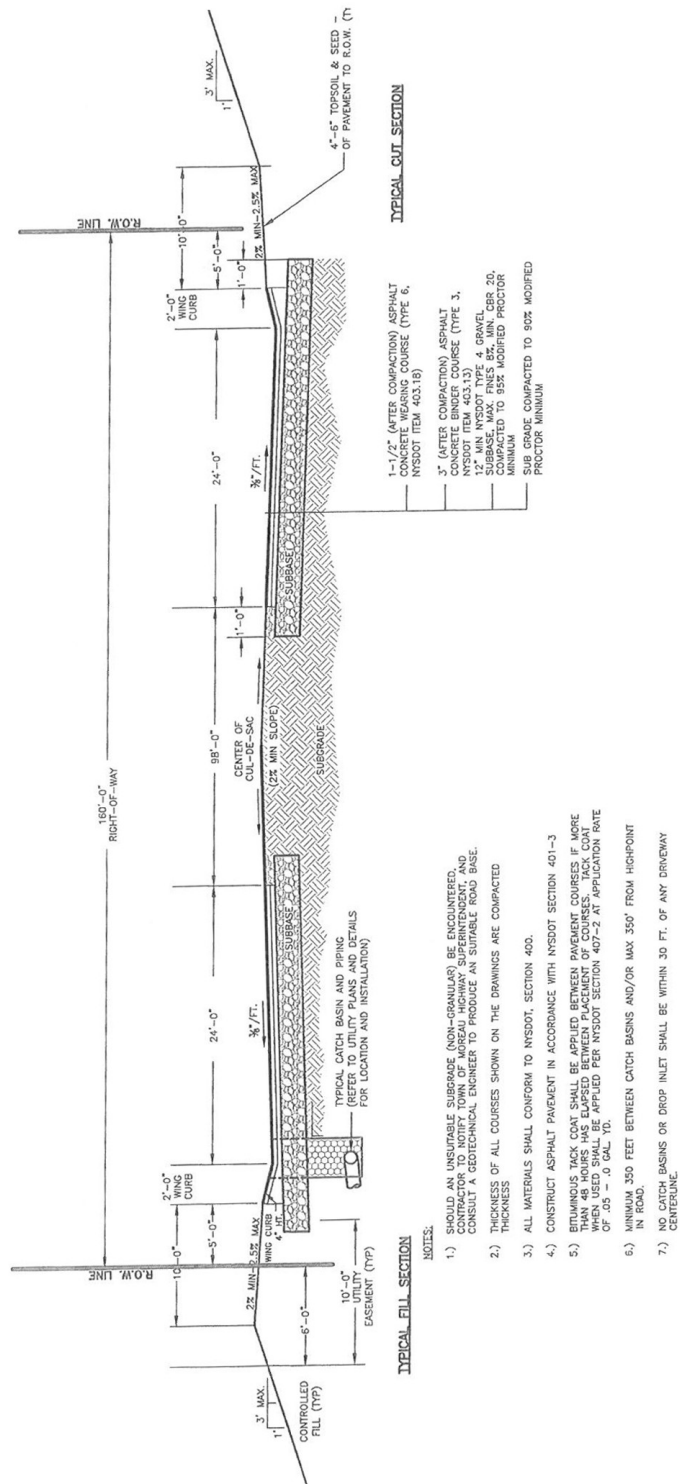


NOTE
AREA INSIDE CUL-DE-SAC SHALL BE
LANDSCAPED PRIOR TO DEDICATION

TYPICAL OFFSET CUL-DE-SAC

NOT TO SCALE

SUBDIVISION OF LAND
124 Attachment 7
Town of Moreau

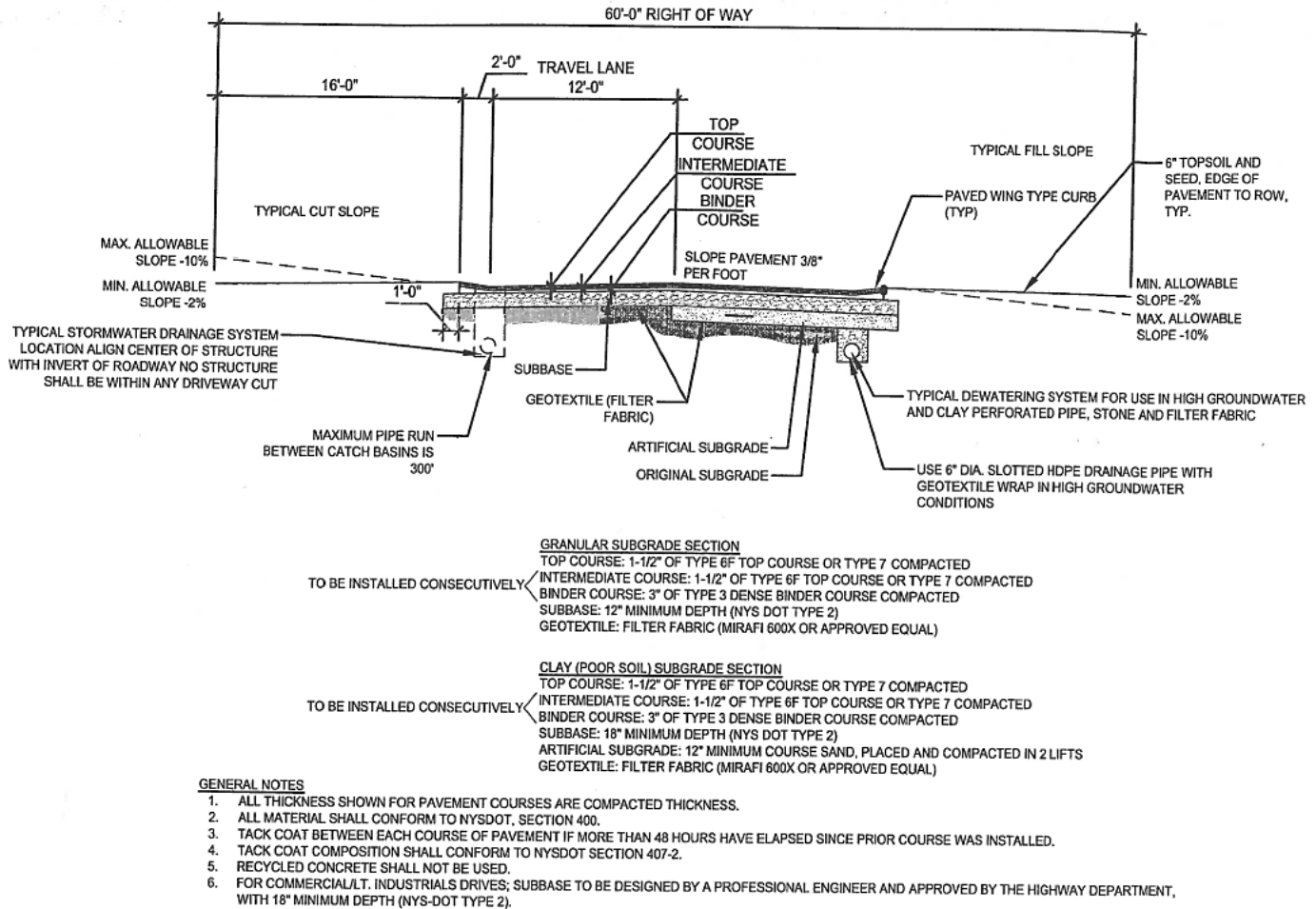


TOWN OF MOREAU
TYPICAL CUL-DE-SAC ROAD SECTION
NOT TO SCALE

SUBDIVISION OF LAND

124 Attachment 8

Town of Moreau



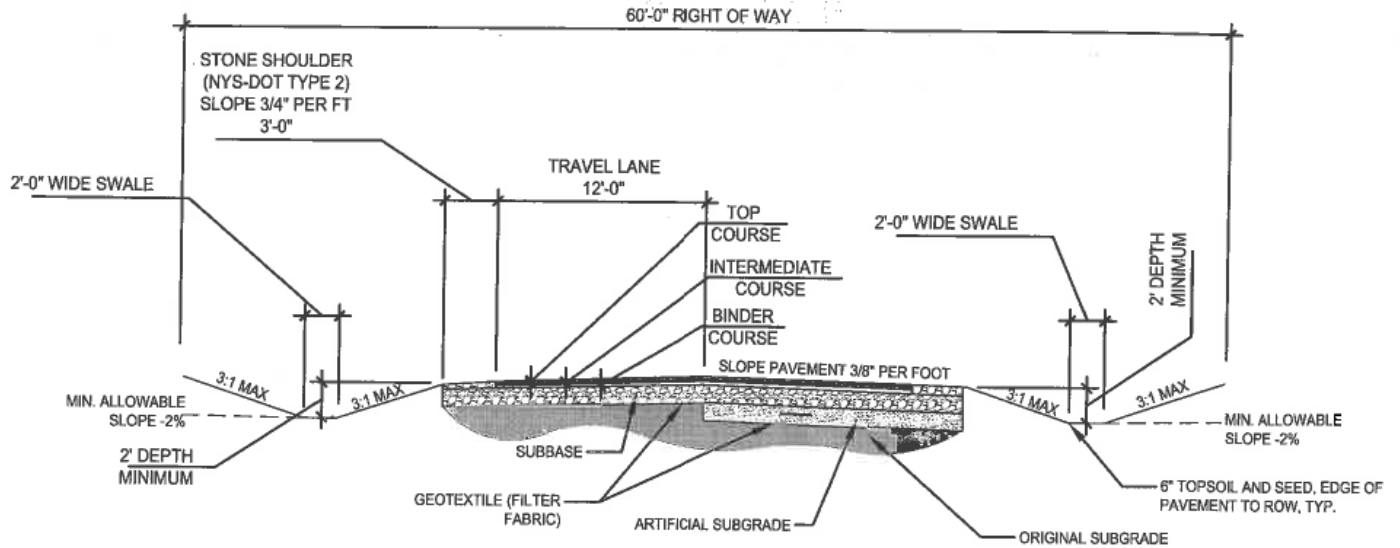
TYPICAL ROAD SECTION DETAIL

NOT TO SCALE

SUBDIVISION OF LAND

124 Attachment 9

Town of Moreau



GRANULAR SUBGRADE SECTION
 TO BE INSTALLED CONSECUTIVELY
 TOP COURSE: 1-1/2" OF TYPE 6F TOP COURSE OR TYPE 7 COMPACTED
 INTERMEDIATE COURSE: 1-1/2" OF TYPE 6F TOP COURSE OR TYPE 7 COMPACTED
 BINDER COURSE: 3" OF TYPE 3 DENSE BINDER COURSE COMPACTED
 SUBBASE: 12" MINIMUM DEPTH (NYS DOT TYPE 2)
 GEOTEXTILE: FILTER FABRIC (MIRAFI 600X OR APPROVED EQUAL)

CLAY (POOR SOIL) SUBGRADE SECTION
 TO BE INSTALLED CONSECUTIVELY
 TOP COURSE: 1-1/2" OF TYPE 6F TOP COURSE OR TYPE 7 COMPACTED
 INTERMEDIATE COURSE: 1-1/2" OF TYPE 6F TOP COURSE OR TYPE 7 COMPACTED
 BINDER COURSE: 3" OF TYPE 3 DENSE BINDER COURSE COMPACTED
 SUBBASE: 18" MINIMUM DEPTH (NYS DOT TYPE 2)
 ARTIFICIAL SUBGRADE: 12" MINIMUM COURSE SAND, PLACED AND COMPACTED IN 2 LIFTS
 GEOTEXTILE: FILTER FABRIC (MIRAFI 600X OR APPROVED EQUAL)

GENERAL NOTES

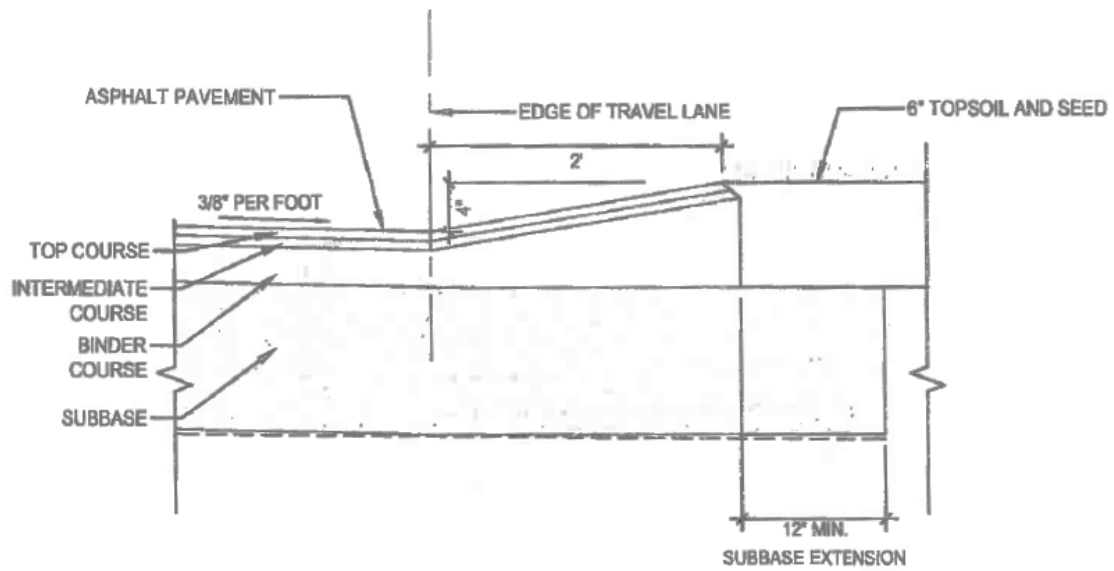
1. ALL THICKNESS SHOWN FOR PAVEMENT COURSES ARE COMPACTED THICKNESS.
2. ALL MATERIAL SHALL CONFORM TO NYSDOT, SECTION 400.
3. TACK COAT BETWEEN EACH COURSE OF PAVEMENT IF MORE THAN 48 HOURS HAVE ELAPSED SINCE PRIOR COURSE WAS INSTALLED.
4. TACK COAT COMPOSITION SHALL CONFORM TO NYSDOT SECTION 407-2.
5. RECYCLED CONCRETE SHALL NOT BE USED.
6. FOR COMMERCIAL/LT. INDUSTRIALS DRIVES; SUBBASE TO BE DESIGNED BY A PROFESSIONAL ENGINEER AND APPROVED BY THE HIGHWAY DEPARTMENT, WITH 18" MINIMUM DEPTH (NYS-DOT TYPE 2).

TYPICAL ROAD SECTION DETAIL

OPEN DRAINAGE OPTION (IF APPROVED BY THE PLANNING BOARD)

NOT TO SCALE

SUBDIVISION OF LAND
124 Attachment 10
Town of Moreau



PAVED WING TYPE CURB

NOT TO SCALE