

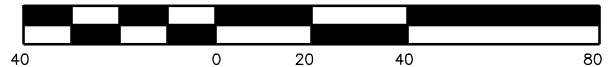
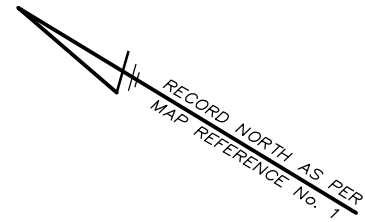
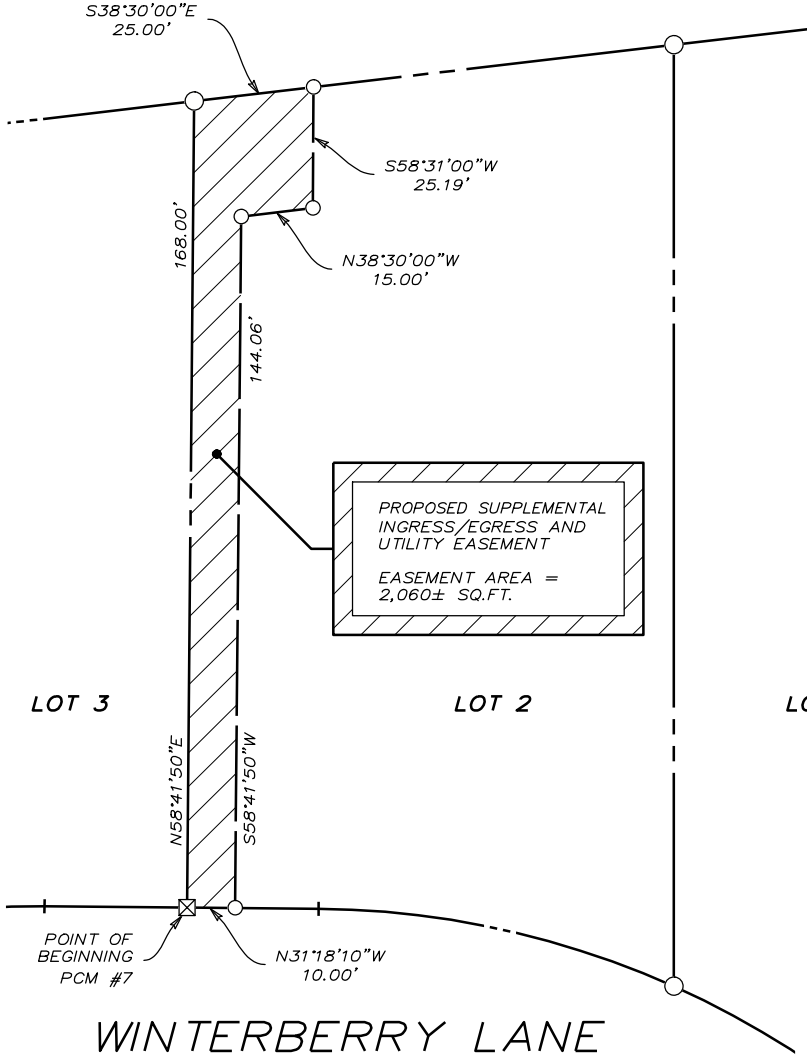
LOT No. 1
(FILED MAP "M2017068)

MAP REFERENCE:

1) Map Entitled: "Subdivision of Lands for Winterberry"
 Map Date: January 5, 2018
 Prepared By: The Environmental Design Partnership, LLP
 Map Filed: June 29, 2018
 Saratoga County Clerk's Office
 Map No. M2018144

LEGEND:

PCM denotes Proposed Concrete Monument



GRAPHIC SCALE (IN FEET)
1 INCH = 40 FT.

SUPPLEMENTAL INGRESS/EGRESS AND UTILITY EASEMENT WITHIN LOT 2 TO BE GRANTED TO THE HOMEOWNERS ASSOCIATION WINTERBERRY SUBDIVISION

TOWN OF MOREAU
SCALE: 1" = 40'

TIMOTHY J. McALONEN

PLS 50,471

SARATOGA COUNTY, NEW YORK
NOVEMBER 4, 2021

tmcalonen@edpllp.com



ENVIRONMENTAL DESIGN PARTNERSHIP, LLP

900 Route 146 Clifton Park, NY 12065
(518) 371-7621 edpllp.com