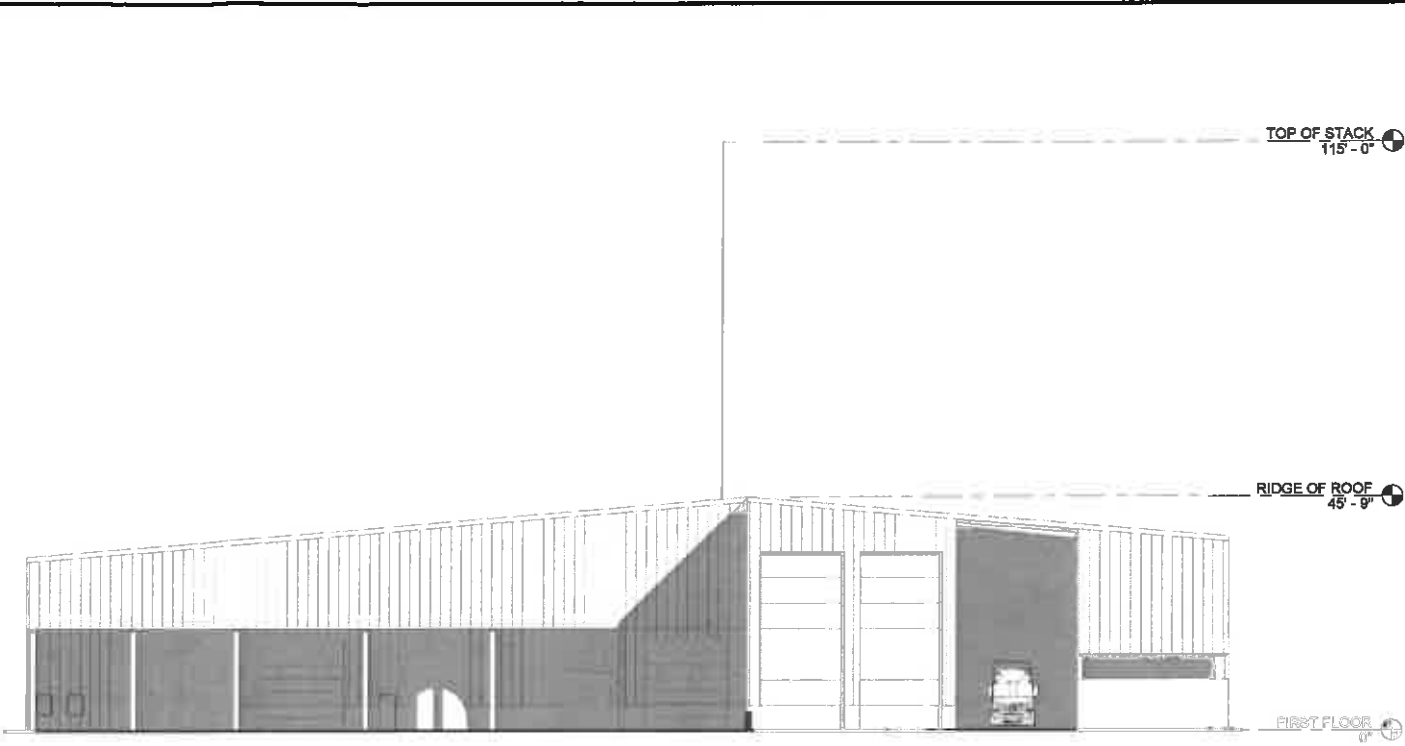
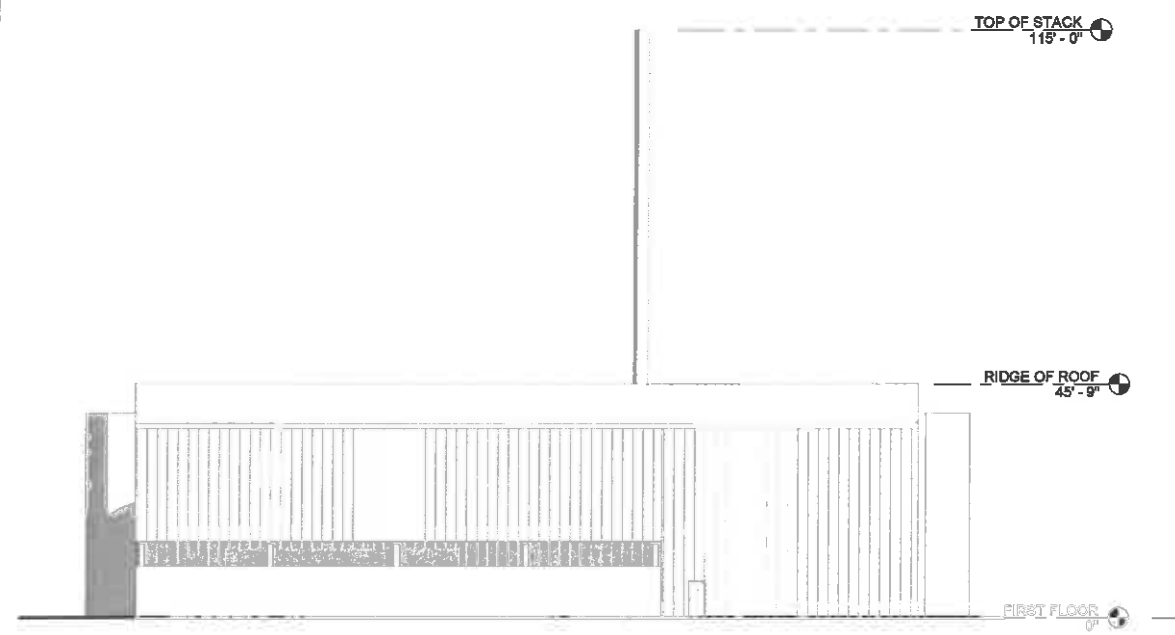


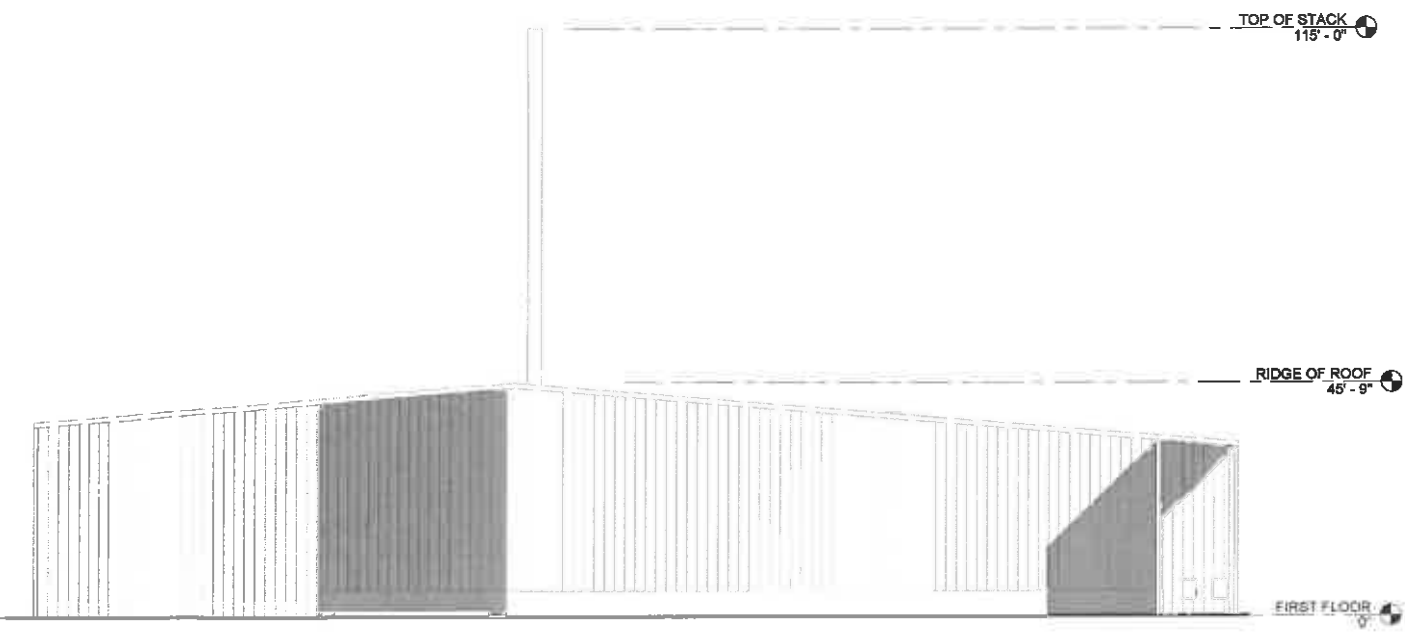
**1 EXTERIOR ELEVATION - WEST**  
1/16" = 1'-0"



**2 EXTERIOR ELEVATION - SOUTH**  
1/16" = 1'-0"



**3 EXTERIOR ELEVATION - EAST**  
1/16" = 1'-0"



**4 EXTERIOR ELEVATION - NORTH**  
1/16" = 1'-0"

PROJECT TITLE  
**SARATOGA BIOCHAR SOLUTIONS**  
2 Electric Drive  
South Glens Falls, NY 12863

SHEET TITLE  
**EXTERIOR ELEVATIONS**

CONSULTANT

DRAWN BY: CMS      CHECKED BY: GLM

DATE: 5/9/22

PROJECT NO.: 20-020

NO.	DESCRIPTION	DATE

PROJECT: SARATOGA BIOCHAR SOLUTIONS

**3t**  
3tarchitects.com

318 RIVER STREET - TRUPTON, NY 12280  
PH: 518 618 0900    FX: 518 618 0901

SHEET NO.: **A201**

The Architect warrants to the owner that the design and construction documents were prepared in accordance with the applicable laws, codes and regulations. The Architect does not warrant or represent that the design and construction documents are complete or that they will be approved by the appropriate authorities.